

CLEAN-CHECK® VALVES

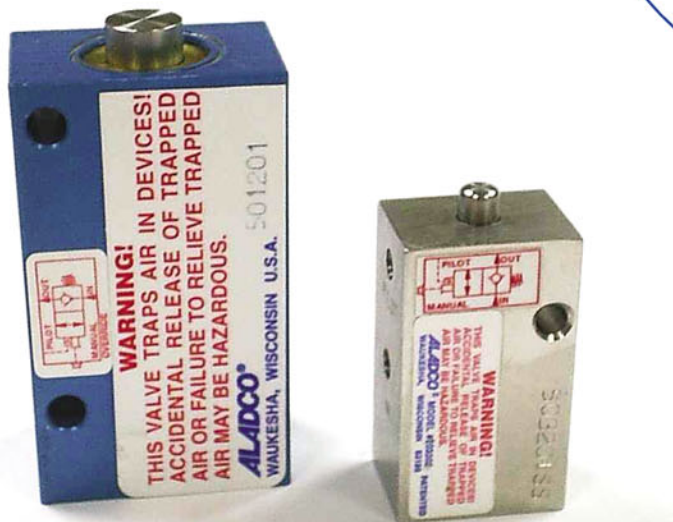
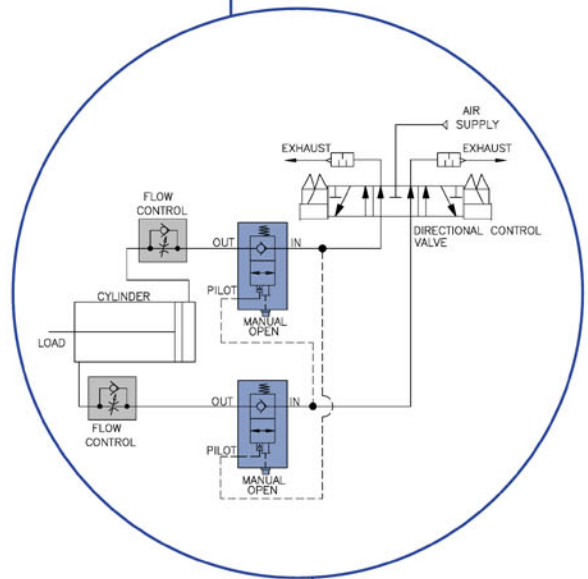
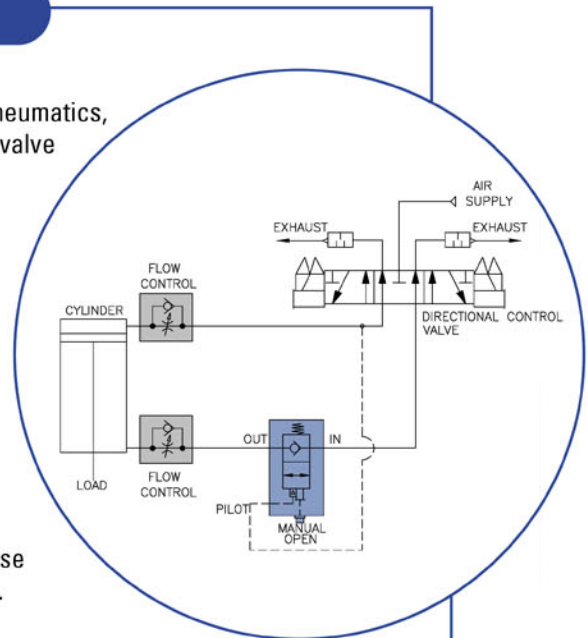
The Clean-Check® Valve, designed specifically for Pneumatics, is a patented ALADCO® product. It is the only check valve on the market with both manual and pilot release capabilities. The bubble-tight seal keeps devices in position. If pressure loss should occur, the valve prevents drifting. To release the seal, depress the manual override button or operate the pilot.

The Clean-Check® Valve is fully sealed for use in clean/sanitary or very grimy environments without its function being affected. The valve is able to tolerate: dust, dirt, oil, grease, detergent, cleaning solution and cutting fluids.

The Clean-Check® Valve has not been designed for use on vacuum, air over oil or high pressure applications.

Features

- All valves are manufactured tamper resistant and require no maintenance
- Superior, self cleaning ball seal provides long leak tight product life
- High strength valve body made of anodized aluminum or stainless steel
- Does not require lubricated air
- Operating pressure 15 - 120 psi
- Cracking pressure 2 - 4 psi
- Exceeds A.N.S.I. Class VI Leak Standard (Bubble Tight) for 1/2" port size

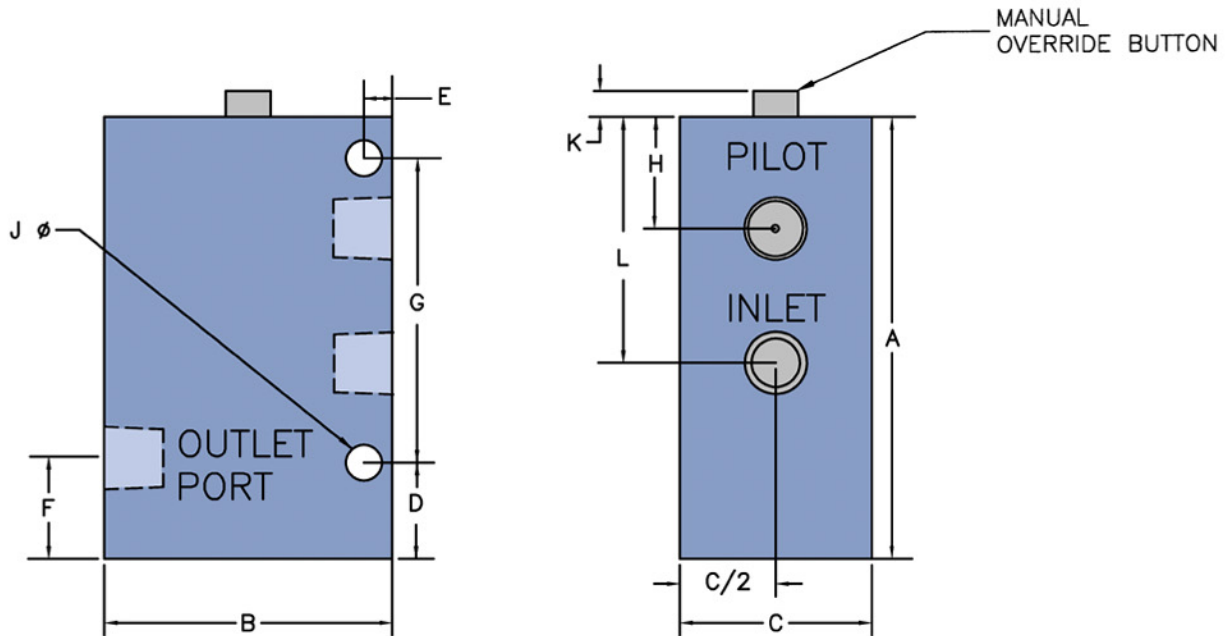


DIMENSIONAL DATA

SPECIFICATIONS

| Port Size | A | B | C | D | E | F | G | H | J | K | L | Pilot Port | Cv | Weight lbs. AL | Weight lbs. SS | Pilot Ratio |
|-----------|------|------|------|------|------|------|------|------|------|------|------|------------|-----|----------------|----------------|-------------|
| 10-32 | 1.75 | 1.00 | 0.75 | 1.20 | 0.85 | 0.40 | N/A | 0.25 | 0.18 | 0.18 | 0.80 | 10-32 | 0.2 | 0.20 | 0.30 | 4:1 |
| 1/8" | 2.60 | 1.50 | 1.00 | 0.60 | 0.20 | 0.63 | 1.75 | 0.63 | 0.22 | 0.20 | 1.40 | 1/8" | 0.8 | 0.40 | 0.90 | 3:1 |
| 1/4" | 3.46 | 2.50 | 1.50 | 0.20 | 2.10 | 0.85 | 2.38 | 0.63 | 0.28 | 0.22 | 1.93 | 1/4" | 1.7 | 1.50 | 3.50 | 4:1 |
| 3/8" | 3.46 | 2.50 | 1.50 | 0.20 | 2.10 | 0.85 | 2.38 | 0.63 | 0.28 | 0.22 | 1.93 | 1/4" | 1.7 | 1.50 | 3.50 | 4:1 |
| 1/2" | 3.46 | 2.50 | 1.50 | 0.20 | 2.10 | 0.85 | 2.38 | 0.63 | 0.28 | 0.22 | 1.93 | 1/4" | 1.7 | 1.50 | 3.50 | 4:1 |

* A-L All dimensions in inches



Note: 10-32 UNF models have only one mounting hole

ORDERING INFORMATION

To order please indicate your part number(s) by formulating the desired style number for each of the corresponding areas from the list below. See the sample part number at right.

| Button Style | Port Size | Seal Type | Options |
|--------------|-----------|-----------|---------------|
| 50 | 32 | 01 | (if required) |

Button Style

- 50 Override Button
- 51 Flush Override Button
- 52 No Override Button

Inlet Outlet Port

- 32 10-32 UNF Thread (M5 Optional)
- 12 1/8"NPTF Thread (1/8"BSPP Optional)
- 25 1/4"NPTF Thread (1/4"BSPP Optional)
- 38 3/8"NPTF Thread (3/8"BSPP Optional)
- 50 1/2"NPTF Thread (1/2"BSPP Optional)

| Button Style | In Out Port | Seal | Option Suffix |
|--------------|-------------|------|---------------|
| 50 | 32 | 01 | SS |

Seal Type

- 01 Buna-N Seals (Temp. range -30° to 150°F)
- 02 Viton Seals (Temp. range -15° to 400°F)

Special Option Suffix

- SS Stainless Steel Construction
- BSPP BSPP Threaded Ports (M5 for 32 Ports)
- NCP No Cracking Pressure

ALADCO®

1100B South Prairie Avenue, Waukesha, WI 53186-5971
Tel 262-544-5994 • Fax 262-544-0116 • www.aladco.com

For Order Information Call • 1-800-383-6994

Improvements to ALADCO products are being actively investigated, so product characteristics may be subject to improvement without notice

